

Dream...

(Continued from page 3)

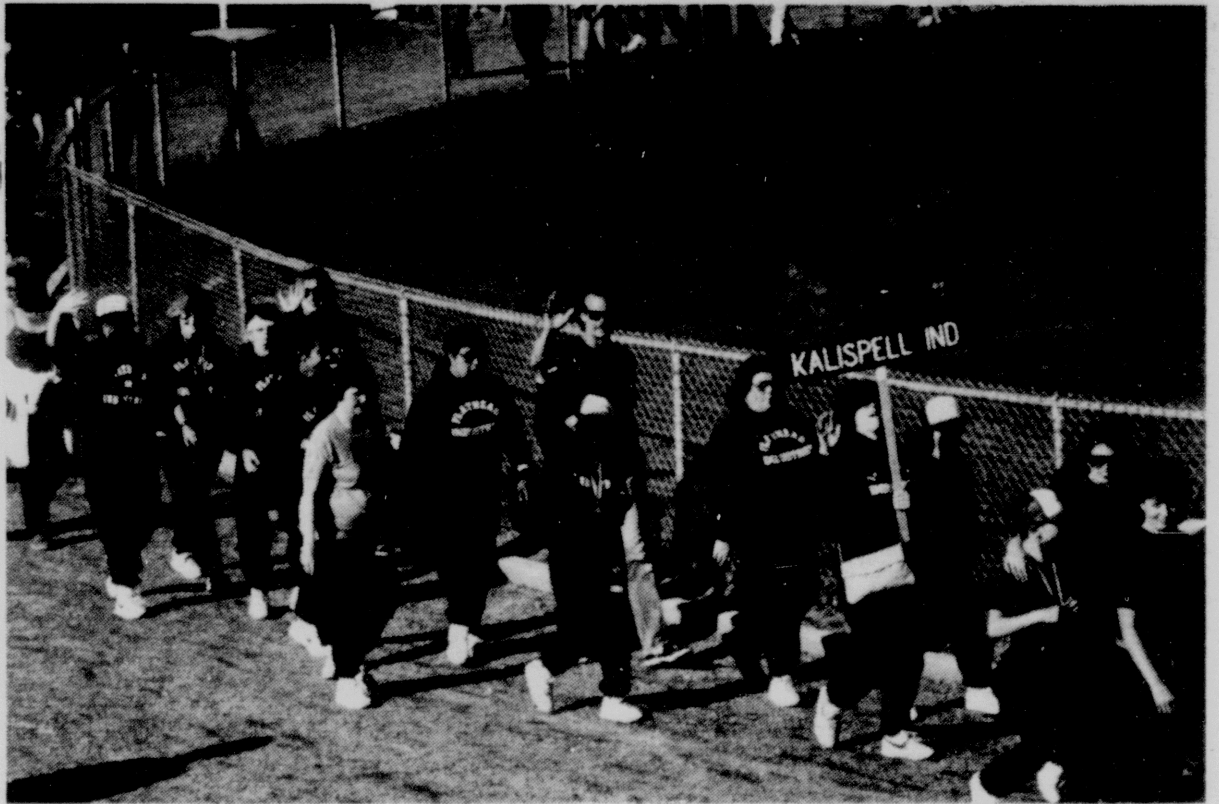
WOODLAND PARK ACCESS PROJECT

This is a project to provide asphalt trails through Woodland Park. Unlike other fundraising projects that serve only a special interest group, this project will enhance the community for our local people, increase tourism, and we hope, serve as a model for other cities.

DREAM GOLF TOURNAMENT

With the help of local business persons, DREAM will hold a Golf Tournament on September 16th, 1989 at Meadow Lake Golf Course in Columbia Falls. The funds raised will be earmarked for the Ski Dreams Program. The format will be a Four Man Scramble, \$25 per person entry fee, \$100 for a corporate team sponsor. There will be many prizes with a barbecue to follow. Please contact Mike Houghtonen at 752-6212 (DAD) if you would like to join in on the fun.

Paved trailways would give disabled and elderly persons accessibility to the pavilions where concerts or plays are held, the flower gardens, picnic areas and the lagoon. This is designed to be a Three Phase Plan. Phase One was nearly completed in 1987. The Project is on hold because of the Tally Lake Project.



Dream Tips . . .

Ramps – maximum slope 1" in 12"
Minimum width of curb ramp 36"

Parking Spaces – 96" width with adjacent aisle 60" wide minimum

Sidewalks – minimum width 36"

A special thanks to the businesses in the Valley who have made their businesses accessible!

Accessibility . . .

Free of Barriers

- Everyone benefits
- Cost effective for new construction
- Functional
- Doesn't detract from aesthetics
- Easy access is inviting, promotes business

Special Olympics is a local, state and international sports training and competition program open to developmentally disabled individuals regardless of their abilities. Special Olympics is the world's largest program of sports training and athletic competition for handicapped individuals, and was founded in 1968 by Eunice Kennedy Shriver and the Joseph P. Kennedy, Jr. Foundation. Having grown from a single track and field event, Special Olympics is now a year-round training program involving over one million athletes and 500,000 volunteers in a variety of sports competitions.

The Special Olympics provides continuing opportunities to develop physical fitness, demonstrate courage, experience joy

and participate in sharing of gifts, skills and friendship with their families, other Special Olympians, and the community.

Special Olympics contributes to the physical, social, and psychological development of mentally and physically handicapped participants. Through successful experiences in sports, they gain confidence and build a positive self-image associated with success rather than failure.

As Eunice Kennedy Shriver, Chairman of the Board for Special Olympics, stated: "...For great world athletes the contest may last only minutes. Then it is over, and they have won or lost. But for Special Olympians the contest can last a lifetime. The challenge begins again each day. What they win by their

courageous efforts is far greater than any games. They are winning life itself, and in doing so they give to others a most precious prize ... faith in the unlimited possibilities of the human spirit..."

SISSON for hair



OPEN MONDAY-SATURDAY
EVENINGS BY APPOINTMENT
WALK-INS WELCOME

752-1515

11 5TH ST E - KALISPELL
DEVONSHIRE BLDG

PERSONALIZED SERVICE
R. Stoltz DRUG Prescriptions
142 East Idaho
Kalispell
755-4103

Kalispell Marine
• Larson
• Four Winns
• Bayliner
1023 E. Idaho
755-5790

Bitney's Furniture, Inc.
744 E. Idaho
Kalispell
Top of Underpass Hill
755-6033

Van Leuven Funeral Home
Dennis H. Schoepp
P.O. Box 186
1010 4th Ave. West
Columbia Falls
(406) 892-4289

We Care.
Professional Prescription Oxygen Therapy
HOC
HOME OXYGEN CARE
Kalispell
752-7911

F.H. Stoltze Land & Lumber Co.
Lumber Manufacturers
Half Moon Rd.,
Col. Falls
892-3252

HELL HEATING & COOLING PRODUCTS
McDowell Heating & Air Conditioning Service
Sheet Metal Works
257-2503
Bob & Dan McDowell

THE OVERHEAD DOOR
SINCE 1921
2197 3rd Ave. E.
Kalispell
755-8749

Locally Owned and Operated
Ever Rite FOOD FARM
2140 Highway 2 East, Kalispell, MT 59903
Store Hours: Mon.-Sat. 8:00 a.m. - 9 p.m. - Sunday 9:00 a.m. - 8:00 p.m.
752-4335

TCI
TCI Cablevision of Montana, Inc.
23 Channels Basic Cable
755-7200 - 862-2531
892-3369