

HARRELL FOREST



Trail name: Swan Hill Trail & Summit Loop

Trailhead address or coordinates:

1017 Bigfork Stage Rd
Bigfork, MT 59911

Entry fee: \$0

Date assessed: June 5, 2024

Trail Information

Trail distance: 6.8 miles

Trail type: Lollipop loop (part out and back, part loop)

Total elevation gain: 750 ft.

Minimum trail width: 28 in.

Bridge crossings: There are no bridges in this trail system

Man-made obstacles: The trailhead has large rocks dividing the parking area from the start of the trail. Some rocks are narrower, with approx. 36 in. of room to pass through, while some are spaced at 40 in. (pictured below in parking section)

Stairs: There are no stairs in this trail system

Pinch points: There are no pinch points along this trail

Switchbacks: There are some switchbacks along this trail, primarily within the first 1.5 miles. You will encounter them while traveling both uphill and downhill. The switchbacks have an even trail width for the duration of the turn with minimal banking and can be navigated with a 3-wheeled bike

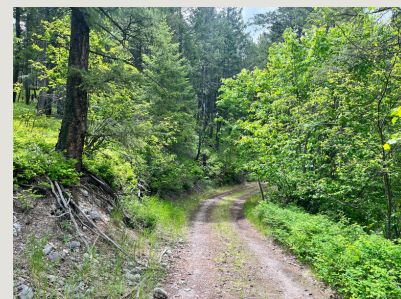
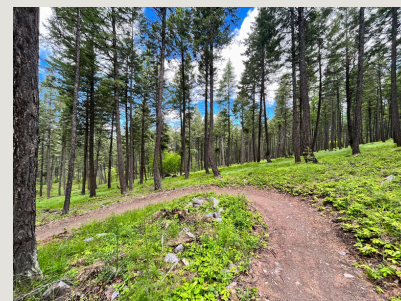
Additional notes: The trail is primarily single track, but there is a section of double track. It is a steady climb up Swan Hill Trail until it intersects with Summit Trail where there are two overlooks with views of Flathead Lake

Activities allowed: Hiking, biking

Trail surface: Gravel, natural

Maximum cross slope: 4.6% or 16.5°
for approx. 10 ft of trail

Maximum trail grade: 3.5% or 12.5°



HARRELL FOREST

Parking Information

Parking lot surface: Gravel

Distance from furthest parking spot to trailhead: 100 ft.

Total number of parking spaces: approx. 20 spots

Are there accessible parking spots? There is 1 accessible spot, however it does not have enough space for a ramp to fold out on the right side of the space (pictured right)



Bathrooms & Amenities

Bathrooms: 1 vault toilet at trailhead with grab bars and low threshold

Water availability: No water source along this route

Food availability: No food along this route

Picnic tables or benches: There are no picnic tables or benches along this route or at the trailhead

Shade levels: The trailhead and beginning section of the trail is in full sun, but as you continue to climb, there is a mix of sun and shade. The two overlooks on this route provide shaded areas and can be used as a resting point (pictured below)



“Just in Case” Safety Information

Cell service available: Yes

Group responsible for trail maintenance: Flathead Land Trust